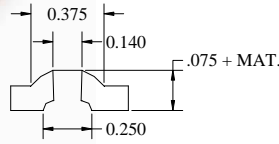




Quality Perforating, Inc.

Carbondale, USA

Traction Tread™



Dimple Design

QPI's Traction Tread™ Channel, Sheet, and Planks

Manufactured with perforated dimples, Traction Tread™ is designed for areas that demand the safety of positive grip such as stair treads, ramps, running boards, work platforms, decks and catwalks. Traction Tread™ can be supplied in several types of materials, as well as a variety of thicknesses. Available in sheet form up to 48" wide or as fabricated channels up to 12' lengths. Sheets can be secured to just about any surface where safety is a concern the channels offer rigidity and load bearing properties. The small hole design (5/16" round) and low amount of open area prevents dropped tools and other objects from falling through.

Features & Benefits

In its dual role as sheet metal floor covering and grating, Traction Tread™ combines slip resistance and strength to provide:

- ✓ Superior slip resistance. The foot contacts the gripping edges of the buttons at every step.
- ✓ Low open area. Debris and tools will not fall through.
- ✓ No holes to snag high heels.



Also available in full size sheets up to 48" wide

sales@qualityperf.com

www.qualityperf.com

1-800-USA-PERF (872-7373)

Traction Tread™ Channels STANDARD SIZES

Galv. / H.R.P.O / S.S. 16 to 11 Gauge

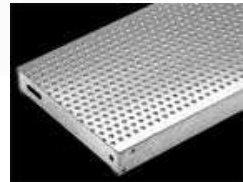
.125" Aluminum -- All up to 144" Long

Width (Formed)	16 ga. Galv. Wt./Ln. Ft.	14 ga. Galv. Wt./Ln. Ft.	12 ga. Galv. Wt./Ln. Ft.	11 ga. Galv. Wt./Ln. Ft.	Height (Formed)
7"	3.63	4.15	4.65	5.39	1.500"
10"	4.57	5.05	5.55	6.09	or
12"	5.35	5.85	6.35	6.85	2"

Aluminum weight factor is .3 Ex. (3.63 X .3 = 1.089 Ln /Ft for .062 Alum)
 Steel weight factor is .94 Ex. (3.63 X .94 = 3.41 Ln /Ft for .062 Steel)
 Stainless Steel weight factor is .95 Ex. (3.63 X .95 = 3.44 Ln /Ft for .062 Stainless)



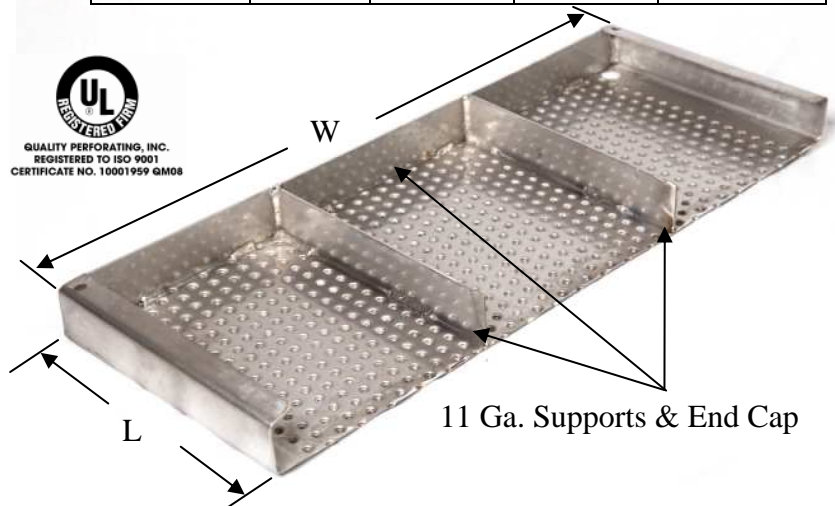
End Caps for every size are available

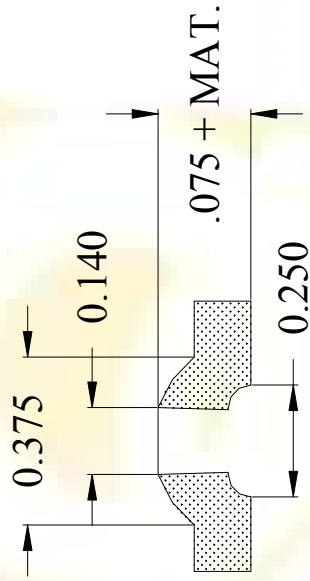
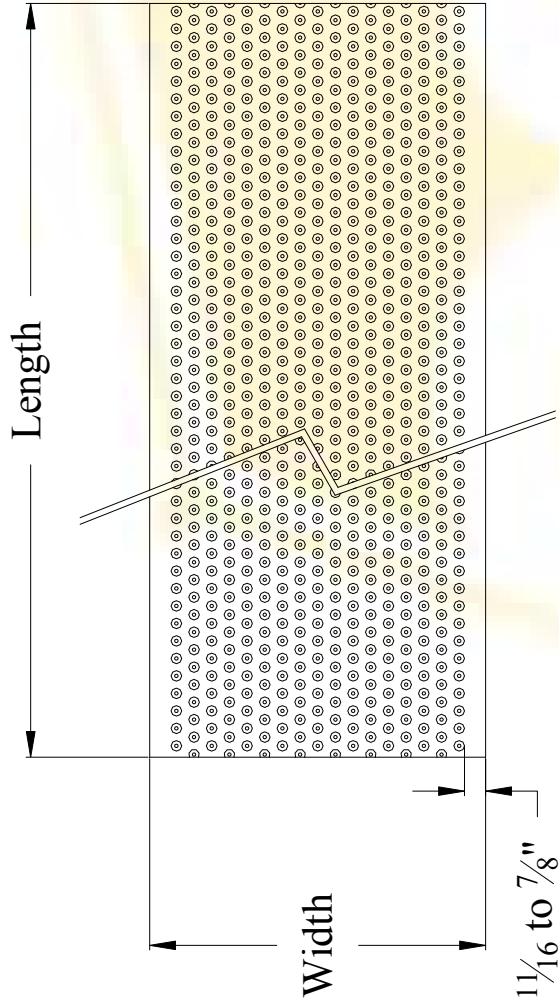


Traction Tread™ Planks STANDARD SIZES

Steel & Stainless Steel 16 Ga to 14 Ga

"W" Width (Formed)	Channel Height	"L" Length.	Wt. (lbs) Approx.	Supports
19.29"	2"	46.25"	19	0
27.17"	2"	46.25"	27	1
29.92" (Shown)	2"	46.25"	30	2





LENGTH	ACT. WIDTH	HEIGHT
12" TO 144"	6.88"	1-1/2 or 2"
	9.88"	
	11.88"	

